



Overall view of the Test Rig ALF 114

Principle

The test rig has been developed for air filter testing according to standards EN 779 and ASHRAE 52.2. The following parameters of the filter under test can be detected:

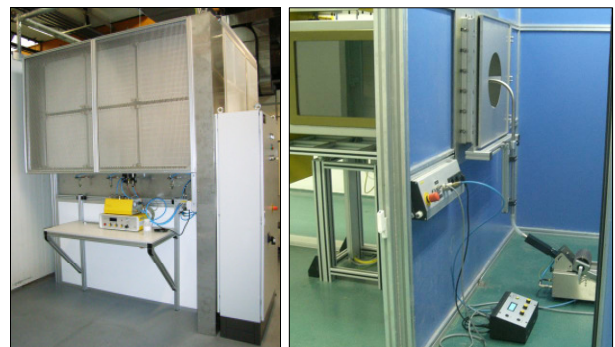
- Differential pressure and efficiency
- Dust holding capacity
- Efficiency after different dust loading phases and average efficiency

The filter samples can be easily installed into the rotatable and movable duct sections. A conditioned and filtrated air flow is loaded with particles. In this way information about the increasing differential pressure and the efficiency of the filters will be obtained. With these results the filter samples can be classified.

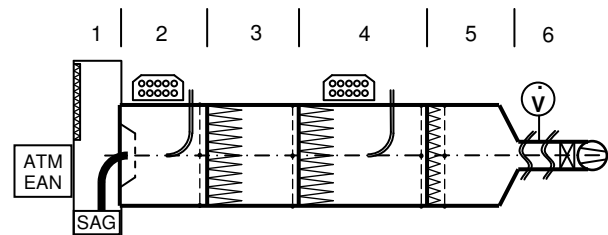
The test duct is divided into 6 duct sections and constructed airproof. By dint of a filter the air is sucked in at duct section 1 and blown out behind the blower (see schematic). The pressure measuring facilities in duct section 2...5 are used for determining the differential pressure of the respective particular filter. The measurement of the pressure drop between the final filter and the protection filter is available as an option.

Special Features

- Measurements according to both standards EN 779 and ASHRAE 52.2 possible
- Rotatable and movable duct sections
- Universal filter holding system
- Online weighing of dust feeder
- Additional test dust feeder for ISO 12103 test dust available
- High level of automation, mostly automated test runs with complete operator guiding through all tests, data handling and protocols
- Safety functions realized in a PLC



Mixing chamber with air intake filter and aerosol generation (droplet aerosols and dust); right: interior view



Duct sections:

- | | |
|---|---|
| 1 | Mixing chamber |
| 2 | Measuring chamber of the raw gas |
| 3 | Filter sample chamber |
| 4 | Measuring chamber of the clean gas and the final filter |
| 5 | Duct section with protection filter |
| 6 | Volume flow rate measuring system |

Schematic drawing of the Test Rig ALF 114

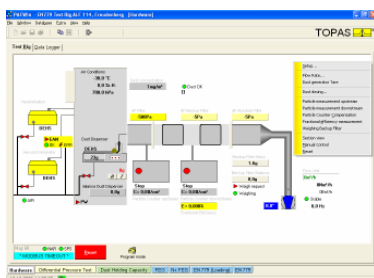
Specifications



ALF 114: View onto the opened test duct

The test rig consists of the following components:

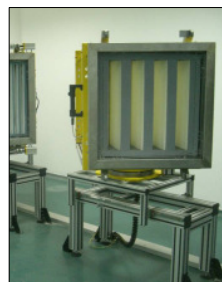
- Inlet air conditioning with particle filter (min. H 13)
- DEHS Aerosol Generator for filtration efficiency measurement and discharging of the filters to be tested, neutralization by means of the electrostatic aerosol neutralizer
- ASHRAE dust generator for dust loading; Online-weighing, mixing orifice
- Test duct sections made from stainless steel, quadratic shaped cross section (610 x 610 mm), with window and backup filter
- Particle measurement at the same time with 2 optical particle counters (0.2...10 µm, 16 particle size classes)
- Universal filter holding system for bag filters and cassette filters, filter cartridges as well as flat sheet filter media
- Sensors for measurement of differential pressure, air flow rate, temperature and relative air humidity
- Flow rate unit with radial blower, controlled by frequency inverter and throttle flap; wide flow rate range (600 ... 6000 m³/h)
- Software



Main window of the software for test rig control as well as data acquisition and evaluation

Technical Data

Flow rate	600 to 6000 m³/h
Differential pressure	max. 2000 Pa
Test aerosol	DEHS, KCl
Loading dust	ASHRAE test dust, ISO 12103-A2 (fine) and ISO 12103-A4 (coarse)
Filter samples	Pocket and cassette filters with max. dimensions 610 x 610 mm Optional: Filter cartridges, max. 400 mm diameter, length of max. 1.5 m Flat sheet filter media, max. surface 1 m²
Compressed air supply	min. 5 bar (17 m³/h)
Power supply	3 x 400 V AC; 125 A; 50 Hz



Filter samples within the test duct (examples)

QMS certified to
DIN EN ISO 9001.



12 100 11908 TMS

For more information please
visit our website at
www.topas-gmbh.de

Specifications are subject to
change without notice.

© Copyright 2010 Topas GmbH.